

# focus on your pet's care

## not the cost

When your pet has an accident or illness, their veterinary care may cost more than you expect. Pet insurance is **designed to give you peace of mind** when choosing the right course of treatment by lessening the financial burden.

**\$831.78**

Abscessed Tooth

**\$3,369.19**

Swallowed Object

**\$1,893.08**

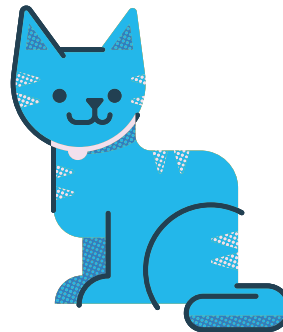
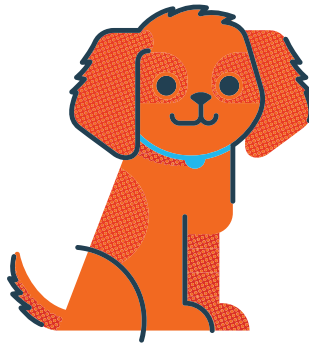
Diabetes

**\$1,584.80**

Pancreatitis

**\$636.46**

Fractured Toenail



**\$815.41**

Periodontal Disease

**\$650.75**

Heart Murmur

**\$1,036.80**

Kidney Disease

**\$652.88**

UTI

**\$1,713.85**

Pancreatitis

\*Based on average claim amounts for all 50 states. Averages based on internal claims data from January 2021 to March 2023.

### how our coverage works:

#### 1. Visit any vet

We don't use a network, so you're free to visit any licensed vet, specialist, or emergency clinic in the U.S. or Canada.

#### 2. Submit a claim

You can easily submit a claim online.

#### 3. Get reimbursed

Receive reimbursements for your vet bill by direct deposit or mail.

### what's covered:



Accidents



Illnesses



Behavioral  
Issues



Dental  
Disease

Priority Code:

1-877-343-5314

**ASPCA**® PET HEALTH  
INSURANCE

**W** WORTHINGTON  
ENTERPRISES

\*Group discount is not available for HI and TN. Group discount available for eligible group members in all other states.

Pre-existing conditions are not covered. Waiting periods, annual deductible, co-insurance, benefit limits and exclusions may apply. For all terms and conditions visit [www.aspcapetinsurance.com/terms](http://www.aspcapetinsurance.com/terms). Products, schedules, and rates may vary and are subject to change. Discounts may vary and are subject to change. More information available at checkout. Preventive Care coverage reimbursements are based on a schedule. Complete Coverage™ reimbursements are based on the invoice. Insurance products are underwritten by either Independence American Insurance Company (NAIC #26581, A Delaware insurance company located at 11333 N. Scottsdale Rd, Ste. 160, Scottsdale, AZ 85254), or United States Fire Insurance Company (NAIC #21113, Morristown, NJ). Please refer to your policy forms to determine the underwriter for your policy. Insurance is produced by PTZ Insurance Agency, Ltd. (NPN: 5328528, Domiciled in Illinois with offices at 1208 Massillon Road, Suite G200, Akron, Ohio 44306), (California residents only: PTZ Insurance Agency, Ltd., d.b.a PIA Insurance Agency, Ltd. CA license #0E36937). The ASPCA® is not an insurer and is not engaged in the business of insurance. Through a licensing agreement, the ASPCA receives a royalty fee that is in exchange for use of the ASPCA's marks and is not a charitable contribution. U0923-VCPC

# focus on your pet's care

## not the cost

### we make it easy to find the best fit for you and your pet.

We think pet parents should be able to get the right care for their pets without worry.

That's why ASPCA® Pet Health Insurance plans are customizable. You can choose the coverage limit, deductible, and reimbursement that work for your budget and your pet's health needs.

### create your custom plan with these options:

#### Annual Limit

The total amount you can be reimbursed over one 12-month policy period. The limit resets whenever a new policy period begins.

\$3K

\$4K

\$5K

\$7K

\$10K

#### Annual Deductible

The amount you must satisfy for covered veterinary expenses before you can start being reimbursed.

\$500

\$250

\$100

#### Reimbursement Percentage

The percentage of covered costs paid back to you after your deductible is satisfied.

70%

80%

90%

### super simple to use

We work hard to make our customers' user experience as simple and smooth as possible.

For your convenience, our online **Member Center is available 24/7** from any device. You can go there to submit and track claims, update your contact and billing information, find resources about our coverage and services, view your policy, and add new pets to your account.

### get back up to 90% on covered vet bills

From chemotherapy to acupuncture, veterinary treatment options are growing exponentially. Unfortunately, so are the costs.

CCL Injury \$3,101.56

Annual Deductible -\$250

Reimbursement % x 90%

---

Cash Back = \$2,566.40

Priority Code:

1-877-343-5314

**ASPCA**® PET HEALTH  
INSURANCE

**W** WORTHINGTON  
ENTERPRISES

\*Group discount is not available for HI and TN. Group discount available for eligible group members in all other states.

Pre-existing conditions are not covered. Waiting periods, annual deductible, co-insurance, benefit limits and exclusions may apply. For all terms and conditions visit [www.aspcapetinsurance.com/terms](http://www.aspcapetinsurance.com/terms). Products, schedules, and rates may vary and are subject to change. Discounts may vary and are subject to change. More information available at checkout. Preventive Care coverage reimbursements are based on a schedule. Complete Coverage™ reimbursements are based on the invoice. Insurance products are underwritten by either Independence American Insurance Company (NAIC #26581, A Delaware insurance company located at 11333 N. Scottsdale Rd, Ste. 160, Scottsdale, AZ 85254), or United States Fire Insurance Company (NAIC #21113, Morristown, NJ). Please refer to your policy forms to determine the underwriter for your policy. Insurance is produced by PTZ Insurance Agency, Ltd. (NPN: 5328528, Domiciled in Illinois with offices at 1208 Massillon Road, Suite G200, Akron, Ohio 44306). (California residents only: PTZ Insurance Agency, Ltd., d.b.a PIA Insurance Agency, Ltd. CA license #0E36937). The ASPCA® is not an insurer and is not engaged in the business of insurance. Through a licensing agreement, the ASPCA receives a royalty fee that is in exchange for use of the ASPCA's marks and is not a charitable contribution. U0923-VCPC